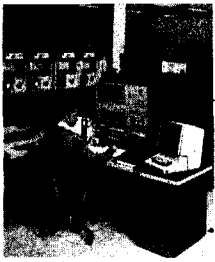


The

Good News

International Magazine of The Church of God





More About Our Cover...

Here is the control console of the Central Processing Unit, the major component for operating the 360 Computer System newly installed in the Administration Annex at Ambassador College. Also shown are four tape drives used for storing and manipulating pertinent data in conjunction with the Data Cell. Read the full report beginning on page 11!

Ambassador College Photo

What our READERS SAY . . .

Eyes Opened by Finance Article

"My wife and I just received the January issue of *The GOOD NEWS* yesterday, and we want to thank Mr. Hill for his very informative article, 'Ten Rules to Financial Success.' My wife thinks this is one of the most inspiring articles she has ever read. I can also say it is truly the article we both needed. I know now the reason our financial burdens and difficulties are giving us so much trouble is because we haven't been applying all of these vital principles in our daily life. We have not been putting first things first and we don't have a budget. No wonder our finances have been so chaotic."

R. N. T., Jr., California

"I have almost finished reading *The GOOD NEWS* I received yesterday and just want to say thank you. Each new one seems more wonderful and moving. Thanks to Mr. Richard F. Plache for his article, 'Are You Blameless in Your Conduct?' I certainly needed this."

Mrs. B. F. J., Georgia

Recipe for Success

"My husband 'put off' sending his tithe because he did not receive a full paycheck — result, he lost his job! Instead of pushing at him as usual, I prayed and tried fasting. It was agony to an undisciplined person like myself but it worked. Not immediately. God tested us both for *over a week*; but yesterday the phone rang, and a job was waiting for my husband. Each day I pray that God will give me a little of Solomon's wisdom, a lot of Abraham and Noah's obedience, some of David's implicit trust, and a lot of Job's pa-

tience and above all, a great heaping lot of Moses' humility."

Reader, Ontario, Canada

Healed of Arthritis

"Up until about a year ago I had an arthritic condition in my right wrist and it would swell up and hurt and I had a hard time working with it. One of God's ministers anointed me and prayed for me and to this day I have not had any more trouble with my wrist. I thank God for His ministers."

Mr. J. D. S., New York

Envoy an Inspiration

"I just had to write and tell you how nice the 1966 ENVOY was. This was my first one, and it was wonderful to see so many nice girls and boys. The buildings and rooms were beautiful. I am sure God must be very pleased with the way you are doing these things. Looking at the ENVOY made me realize how I should be like that, too. I look over this very closely to see just how they were trained. I know that we women at home should be training ourselves to cook and sew and making a better home for our husband. With what little education I have, some of this has been a struggle for me, but since I have moved up here near the Toledo Church and can now get some books to read, this has helped a great deal."

Mrs. E. H., Ohio

"I have just received my copy of the ENVOY. How EXQUISITE! It is incomparable. I spent 4 years in a liberal arts college. Our annual was a 'comic book' compared to the ENVOY."

N. A. K., Illinois

The Good News

International magazine of
THE CHURCH OF GOD
ministering to its members
scattered abroad

April, 1967

Volume XVI

Number 4

Published monthly at Pasadena, California
© 1967, by Radio Church of God

EDITOR

HERBERT W. ARMSTRONG

EXECUTIVE EDITOR

Garner Ted Armstrong

MANAGING EDITOR

David Jon Hill

SENIOR EDITORS

Roderick C. Meredith

Herman L. Hoeh

Associate Editors

Albert J. Portune

Ronald Kelly

Contributing Editors

David L. Antion	Leslie L. McCullough
Dibar K. Apartian	Bill L. McDowell
C. Wayne Cole	Raymond F. McNair
Raymond C. Cole	C. Paul Meredith
William Dankenbring	L. Leroy Neff
Ronald L. Dart	Richard F. Plache
Charles V. Dorothy	John E. Portune
Jack R. Elliott	Paul S. Royer
Selmer L. Hegvold	Norman A. Smith
Charles F. Hunting	Lynn E. Torrance
Paul W. Kroll	Gerald Waterhouse
Dennis G. Luker	Dean R. Wilson
Ernest L. Martin	Basil Wolverton
Clint C. Zimmerman	

Foods Consultants

Velma Van der Veer

Mary E. Hegvold

Isabell F. Hoeh

Rose McDowell

Editorial and Production Assistants

Steven J. Gray

Paul W. Kroll

Donald G. McDonald

BUSINESS MANAGER

Albert J. Portune

ADDRESS ALL COMMUNICATIONS to the Editor, Box 111, Pasadena, California 91109.

Canadian members should address Post Office Box 44, Station A, Vancouver 1, B. C., Canada.

Our members in United Kingdom, Europe, and Africa should address the Editor, B. C. M. Ambassador, London, W.C. 1, England.

South Africa: Post Office Box 1060, Johannesburg, Transvaal, R. S. A.

Members in Australia and Southeast Asia should address the Editor, Box 345, North Sydney, N. S. W., Australia.

In the Philippines, Post Office Box 2603, Manila. BE SURE TO NOTIFY US IMMEDIATELY of any change in your address. Please include both old and new address. IMPORTANT!

Feast of Tabernacles—1967

Preparations rush forward for the 1967 Feast of Tabernacles. New innovations and a NEW area will make this year's Feast again — THE BEST EVER.

by Albert J. Portune

MR. PAUL ROYER, Festival coordinator, and I have just returned from another important trip to the Pocono Mountains in Pennsylvania—site number five for God's Annual Feast of Tabernacles in the U. S.

Although there are still six months to Festival time, my heart is in my throat thinking of the monumental preparation and work yet to be accomplished there.

With God's help—and yours—we will accomplish it, however.

Brethren, ever since the last strains of the hymn "God Be With You Till We Meet Again" echoed from the last service of God's Feast last year, we have been hard at work planning for this year's Feast. *FORTY-FOUR THOUSAND PEOPLE* will attend God's Feast of Tabernacles this year. Those 44,000 will enjoy the *best Feast ever*.

For each of the four areas where God's people met last year—Big Sandy, Texas; Squaw Valley, California; Jekyll Island, Georgia—and Long Beach, California, much has already been accomplished. Organization has taken shape. Festival Elders, assistants, housing coordinators, recreational directors and many other key responsibilities have been assigned.

As we view God's Great Feast taking shape here at Headquarters, we certainly feel this will be the greatest Feast of Tabernacles yet in this era of God's Work.

At the present moment, with the increase God is granting us, it looks like the attendance figures in the *FIVE* areas—including the Poconos—will be distributed as follows: Big Sandy, 14,500; Squaw Valley, 7,000; Jekyll Island, 7,000; Long Beach, 7,500 and 8,000 in the Poconos. Each of the

areas will be amply supplied with happy, *REJOICING* brethren praising God at His Feast.

New Feast Brochure

Brethren—another new *FIRST* is coming this year! We are preparing for each of you a Feast of Tabernacles portfolio or brochure which will be a lasting and valuable record for you to keep to remember each Feast.

This full-color brochure will be the *SAME* for everyone—regardless of the area you attend. It will contain an opening editorial by Mr. H. W. Armstrong on the theme of the Feast. Next will come a full article by Mr. G. T. Armstrong on the *MEANING OF THE FEAST*. Then will come general instructions on keeping the Feast—a valuable aid for everyone. Following this, several pages will be devoted to illustrating *each* area—with color photographs, maps, diagrams, schedules, and illustrations—showing the beauty, facilities, and activities of each Festival location.

This will be followed by an article on the approach to changing areas, giving an outline of how to change areas and points to consider in making your decision. The next section of this many-paged portfolio will contain a Festival diary area where you can keep a record of your trip—record your expenses and perhaps put in a picture or two. In this section will be hints on budgeting and use of second tithe.

The next section will contain a quick panorama of the Feasts *overseas* with pictures of each area and of God's people around the world. Another section will explain camping facilities and the blessings of camping at each area where facilities are available. This section will have a catalog of camping equipment and order blanks for those wishing to order these items.

Another important article will follow on the subject of "How to Prepare to Rule"—a vital subject for everyone attending the Feast. At the end of this most valuable brochure will be many pages of ruled notepaper for you to take your sermon notes. A pocket in the back cover will allow you to slip in other items such as postcards, pictures or personal notes you may want to save.

Many other items will be included to give everyone an indexed, full-instructional and informative *written* help to make your Feast a memorable one. Your personal copy will accompany you and be a guide in many of your Feast activities.

When the Feast is over, you can file your copy away as a complete record of your 1967 Feast of Tabernacles—a record you will review and relive many times through the succeeding year.

This Feast brochure or portfolio will be going to press in early April and should be ready for mailing by early May—well in advance of the Feast so you may do your planning early and send for reservations.

Although this *sounds* like a costly publication, it will actually *SAVE* God's Work many hundreds of dollars. This brochure will contain *ALL* the information concerning all Feasts. It will require *ONE MAILING ONLY* and will cut down on the several letters usually required in advance of the Feast. The saving in mailing costs and labor will more than make up the cost differential.

Poconos Progress

Just before leaving for the Poconos on this last trip, we signed the contract for the massive paving of the huge tent area and two huge parking lots in addition to roadways and access aprons.

This work will begin in just a few weeks.

While in the Poconos we finalized the "critical path" working schedule for all phases of the site development. Working with our architect, Mr. George Evans, Local Elder from the Philadelphia area, we scheduled the design development of the administration building and restroom facilities. In addition, studies are under way for water systems, electrical systems and sewage disposal. Contacts are being made with all local authorities.

When spring comes soon to the Poconos a literal *beehive* of activities will begin on our beautiful properties — culminating just a few months later in a breathtaking Feast site for God's people.

Growth, Growth, Growth

This year 8,000 will attend in the Poconos. The following year 12,000. In 1969 at least 15,000 must meet at this new site. BUT, by 1969, even with 15,000 in the Poconos, and all other sites *filled* to capacity, there will still

be 14,000 people MORE than we can accommodate. This means we must begin planning for site No. 6 — NOW!

With the "tithe of the tithe" God's people are sending to Headquarters, this extensive Feast planning and preparation is possible. At this time it would be a *real help* to us at Headquarters if each one would estimate the amount of second tithe you will have by Feast time and send in 10 percent of that amount to Headquarters. We will then be better able to continue our work as scheduled.

God's people have been very faithful in this phase of God's Work, and we certainly wish to thank you all sincerely for helping us make God's Festivals a joy for everyone.

As End Nears

As we rapidly approach the climax of God's Work on this earth, the significance and deep meaning of the Feast of Tabernacles becomes more and more important.

God is calling out a people for His name to *prepare the way* for the return

of Jesus Christ — WORLD RULER. We are announcing His return and coming Kingdom to this earth with ever-increasing *strength* and *power*. Giant new doors are opening — doors of radio, television and increased spiritual VIGOR.

The sermons you will hear at every Feast site will carry an urgency and a more vital message than *ever before*.

You need to attend — to hear these words and to draw nearer to God and to God's people. The events of the last several months have shown us we are in the last lap of God's Work — the VITAL GUN LAP.

The Feast of Tabernacles portrays the coming of the reign of Christ on this earth. It pictures the world at peace — filled as full as the seas with the knowledge of God. It pictures joy, rejoicing, deliverance and abundance. God commands us to be together each year at that time to reaffirm that lesson and truth — BE THERE.

Summary of Poconos

Back in the Poconos Mr. Raymond Cole, District Superintendent in the Manhattan district and one of the leading Evangelists in God's ministry, has worked long and diligently on the planning and follow-through detail work. He has been instrumental in many of the key contacts in the development of the Poconos area. He has been on the scene from the beginning and has seen firsthand the step-by-step development of the Poconos Feast site.

In addition, Mr. Cole was in attendance at some of the very first convocations of the Feast of Tabernacles in this age back in Oregon. He has written for this issue a summary panorama of the Feast development, giving a firsthand account of the Poconos project. Be sure to read his article — "And Now the Poconos."

Brethren, all of us can feel we have a part in preparing the facilities for God's Feast of Tabernacles this year. We are doing our best here at Headquarters. One of our greatest thrills will be in seeing that YOUR rejoicing is made even more acceptable in God's sight.

See you all at the Feast.



Ambassador College Photo

Mr. Portune and Mr. Cole try out our own D-6 Caterpillar tractor at the Pocono Feast Site. Flaming fall colors frame one of the many serene lakes in the Pocono area!

And Now the Poconos!

by Raymond C. Cole

BREATHTAKINGLY BEAUTIFUL. Forested. And verdantly carpeted. These are mountains of serenity and peace. Most colorful and inspirational. Mountains of gentle undulating terrain — invitationally warm, scenic, alluring and attractive. Life is abundant and greatly variegated — found upon glacially eroded and scarred earth.

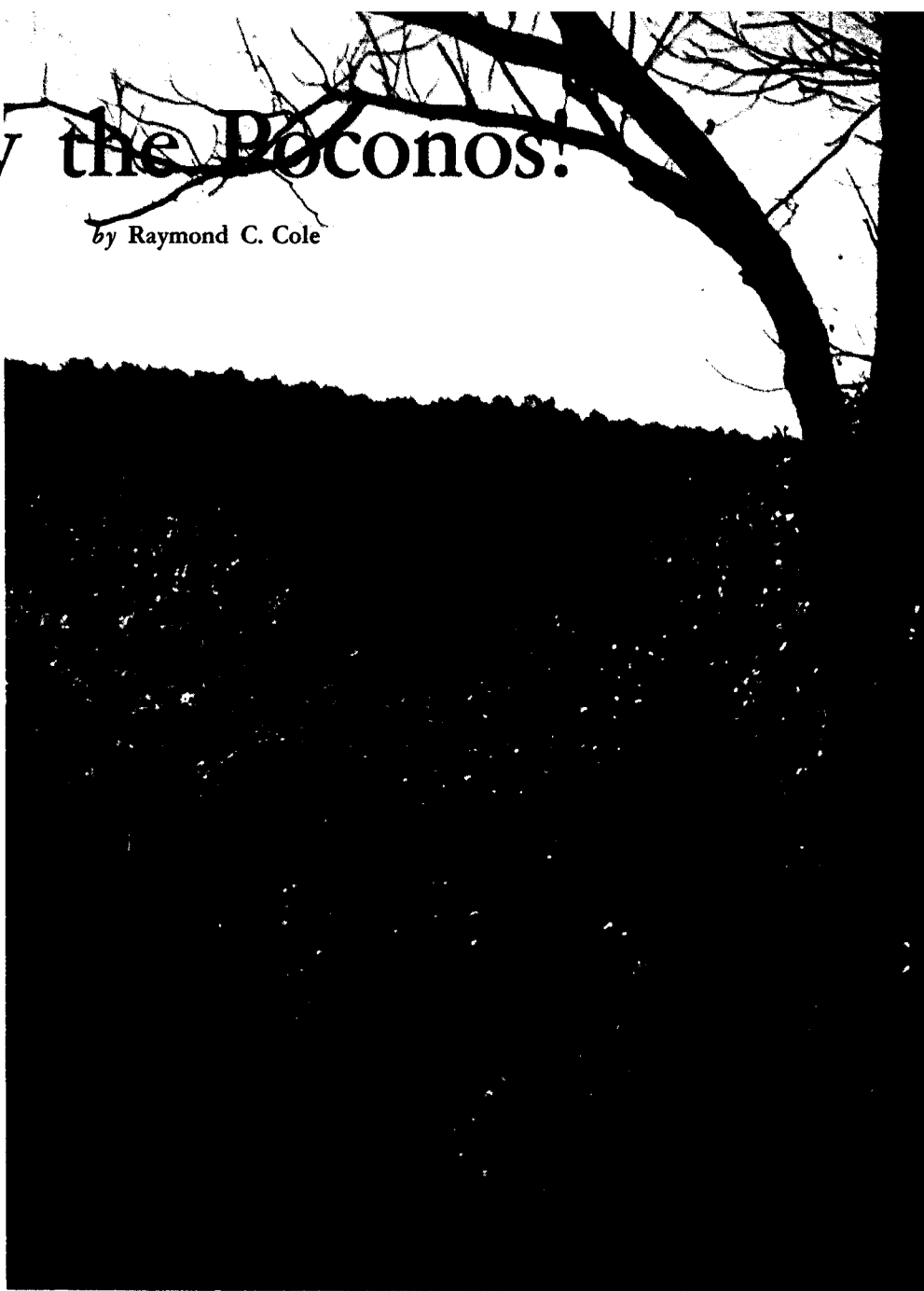
But just where are these magnificent and fabled mountains? Why should you be interested in them? Why should they be the site for the fifth Feast site in the United States?

First, why should we be interested in the Poconos at all? Read about the phenomenal growth of the Feast of Tabernacles — the reason for a new site in 1967.

History of Growth

Not long ago the Feast of Tabernacles was held in one place only — in the foothills of the Oregon Cascades. The location, Belknap Springs, is approximately sixty miles east of Eugene. A very inspiring and peaceful setting loved and fondly remembered by the early members of God's Church today. After seven years, growth forced us to move elsewhere in the year of 1952. Resulting from much praying and searching, the equally inspiring place of Seigler Springs — just north of San Francisco — was found — the place God had chosen and set His Name for the Feast that year.

Far beyond our expectation, members poured into that rustic resort in obedience to the command of God, "Convoke before me in the place where I set my name." (Deut. 14:23-26.) The result? We had outgrown the facilities in one year. Again, the search was on for adequate facilities for the Feast in the next year — 1953. In due time, it was evident God had selected and placed His Name on a piece of property purchased earlier for other purposes. This location was the now well known College and Feast site near Big Sandy, Texas.



After continuous growth — outgrowing two tabernacles designed for Feast purposes — we were forced to consider the possibility of having the Feast in more than one place. At first this thought was viewed with little enthusiasm. It seemed contrary to what we thought we wanted. But God had shown us in many ways that it was essential to have the Feast in other places — strategically located — even in the United States. It was in 1961 that God opened the doors of internationally famous Squaw Valley for the Feast of Tabernacles. That beautiful and most awe-inspiring place has been used each year since.

Then came 1963!

We had so numerically grown that a third place had to be sought. Canvassing the United States, the beautiful and tropical Jekyll Island, Georgia was found. What a blessing and memorable site this proved to be.

Next! On to Long Beach, California.

For years it was becoming apparent that a site was needed in the area of the Headquarters of this Work. That place was opened to us in the Fall of 1966. A great blessing indeed for the sake of

Ambassador College Photo
Flaming fall colors frame one of the many serene lakes in the Pocono area!

the ever-increasing demands of God's Work.

Again, growth!

The need was obvious. But, where would God open the door for the next Feast site? Many ministers throughout the United States were looking for facilities which would satisfy the demands of a Feast site. In many cases, information, details, brochures and other statistics were sent to Pasadena for the careful scrutiny of those responsible for planning these sites year by year. They were checked out or given appropriate consideration. For varying reasons most had to be rejected before giving too much intensive thought and investigation to them.

In exactly the same way, several ministers had canvassed the Pocono Mountains. The area was at once interesting and exciting to them. Armloads of literature, brochures and other pertinent information were gathered and made available for careful study by Headquarters personnel. After that introductory consideration, it was deemed wise to send responsible men from Pasadena to gain a broader and more personal knowledge and feeling of the area. Messrs. Portune and Royer were the first to see the general terrain and have an opportunity to talk with several of the prominent businessmen of the Poconos. Next, Mr. Ted Armstrong made a trip back with Mr. Portune and Mr. Royer. In each case, the interest, optimism and excitement about the potential were very evident. Was this, indeed the place God had chosen for the next—fifth—Feast site? It began to look as though the long search was finally fruitful. But, it was important not to become too optimistic until many local conferences were held, conditions were checked out and public opinion sampled. These factors to be explained later.

Where Is Mt. Pocono?

Never before have most of you heard of the Pocono Mountains. Just where are they? Where is our property in relationship to the area?

The Poconos are a small range of mountains which at no point exceed an elevation of 2,500 feet. Located in the northeastern part of Pennsylvania. The

approximate center of this range is just north of Mt. Pocono—about the location of Canadensis. From this center they spread out every direction about an equidistance of 25 to 30 miles. Stroudsburg is actually the gateway to the Poconos from the New Jersey side. Following U.S. Route 611, passing through Stroudsburg, one would come to the northwestern edge of the Poconos—near the larger cities of Scranton and Wilkes-Barre. A distance of about 50 or 55 miles from the point of beginning is a most scenic as well as a scientific curiosity, the Delaware Water Gap. This Gap is a natural fault in the mountain range. It is located at the mutual border of Pennsylvania and New Jersey—just three miles from Stroudsburg, Pennsylvania. Mt. Pocono is very near the apex of the largest and more familiar mountain of the chain—Big Pocono. The property purchased by the Radio Church of God is situated very near the top of this mountain—approximately two miles north of Mt. Pocono on U.S. Highway No. 611.

Why the Pocono Area?

Selecting a new Feast site requires that careful attention be given to many physical characteristics. Are the roads adequate? Are there sufficient housing accommodations? Are these accommodations sufficiently versatile—in cost and type—to properly assign members of the Church? What about the weather? Will it be comfortable for the people during this period of the year? These and many other factors had to be considered.

There is an excellent road system throughout the Pocono Mountains. Access from every part of the northeast is easy. Interstate freeways cut across the area to the south, north and west of the Feast site. People can easily and quickly come from any part of eastern Canada, from all parts of the New England area, from the south, west and east via fine divided highways. This fact alone should add to the pleasure and enjoyment of traveling to the Feast.

Housing is plentiful. There should be no crowded conditions. Nestled back in the woods, valleys, mountain peaks and along many lakes are some of the finest resort accommodations of the

East. There are types of units to fit the desire of anyone.

Recreation is a big consideration during the Feast. This site features about as great a collection of recreational facilities as are concentrated any place in America. What will it be for you? Golfing? Horseback riding? Tennis? Bowling? Swimming—both indoors and outdoors? Boating? A ride on a ski lift? Shuffleboard? Softball? Or maybe for another will it be: Archery? Ping pong? Bicycle riding? Water skiing? Volleyball? For those who like the more sublime and less energetic sports, perhaps your choice would be a social evening of fellowship and enjoyment in one of the elegant lounges—with friends whom you have not seen for at least a year. Whatever the choice, there will be much to do—activities to keep you occupied in those free hours. Also, year after year, there will be the ceaseless panorama of breathtaking mountain beauty—an activity that will undoubtedly thrill many—and be a lasting memory for years to come.

The above considerations are vitally important. But, perhaps, the most important in this particular selection is the strategic location. Mt. Pocono is about equidistant from New York City, Newark, Philadelphia and Harrisburg—a mere 90 miles. Other major cities of the East are not far removed from the area. Baltimore, Boston, Buffalo, Washington, D. C., Hartford, Richmond, Toronto and Pittsburgh are but a short drive from these "hills." Although not absolutely necessary for a Feast site, a centralized area in this giant complex of major metropolitan centers is a worthy consideration. It is a benefit to all concerned. Is it not most interesting that the very geographic area possessing all the requisites of a Feast site should be so centralized? God has led us to the place where He has set His name—fixed His attention. We owe our thanks to Him.

What About the Weather?

The climate is quite mild during that part of the year. Consider the month of October—the years of 1958 to 1964. For the daytime, the average mean temperature is 65.7 degrees. The

(Continued on page 20)

WILL YOUR LOVE WAX COLD?

Why did Jesus Christ forewarn that during our time, many — even in His Church — will become calloused, hard, unsympathetic? Will you be one who will let your love grow cold? How can you make certain this doesn't happen to you?

by Raymond F. McNair

IN THE Olivet Prophecy, Jesus foretold the world-shaking events leading up to His Second Coming. He showed that worldwide hate would lead to *wars* (climaxing in World Wars), *famines, pestilences,* and widespread *earthquakes!*

Then Christ sounded a fearful warning!

"All these are the beginning of sorrows. Then shall they deliver you up to be afflicted, and shall *kill you* [referring to the terrible end-time persecutions, culminating in the Great Tribulation!]; and ye shall be hated of all nations for my name's sake. And then shall *many* be offended and shall betray one another, and shall hate one another. . . . And *because iniquity shall abound, THE LOVE OF MANY SHALL WAX COLD*" (Mat. 24:8-12)!

Have YOU taken this warning from your very Saviour *personally*? Have you made an inventory of your life lately to be *sure* you are not guilty of this charge?

Christ also solemnly promised the overcomers: "He that shall ENDURE *unto the end*, the same shall be saved" (verse 13).

Speaking of His Second Coming, Jesus gave another solemn warning in this Olivet Prophecy: "But and if *that evil servant* shall say in his heart, My Lord delayeth his coming: And shall begin to *smite his fellowservants* and to eat and drink with the drunken; The lord of that servant shall come in a day when he looketh not for him, and in an hour that he is not aware of, and

shall cut him asunder . . ." (Mat. 24:48-51)!

Is it possible for a "servant" of God to get careless and begin smiting his own fellowservants? Whether or not this means that such an "evil servant" would *literally* smite his fellowservants, or whether it refers to *him smiting his fellowservants with his tongue* — one of the cruelest kinds of injury — this warning is, nonetheless, very explicit in pointing out the lack of true, deep love which some will exhibit toward their brethren!

Don't Lose Your First Love!

The Church at Ephesus (typifying the Apostolic Church era) made the sad mistake of letting its first spiritual glow grow faint. And this happened to the very people who heard the inspired messages from the lips of Christ's chosen Apostles!

Christ rebuked the Church of Ephesus for only one sin — "*because thou hast left thy first love!*" It grieved our Saviour very much to see those early New Testament Christians let their spiritual love — for God, for the brethren and for God's Work — diminish! He wanted to see them keep up their first love — and increase it!

The same applies to us today!

What did Christ point out as *the solution* to this serious problem? "Remember therefore from whence thou art fallen, and *repent*, and do the first works; or else, I will come unto thee quickly, and will remove thy candlestick out of his place, *except thou repent*" (Rev. 2:5).

This divine counsel points out the real answer to the problem of all those who have *left their first love!*

Do you *remember* the love, zeal and warmth toward God, His people and His Work, which you had at the time of your conversion? Repent! Get back to the beginning. *Confess* your wretched condition to God! *Ask Him* to mercifully *forgive* you for letting yourself get into this hardened condition; then *pray for divine strength* and guidance so that you may become an *overcomer* — and eventually inherit a place of rulership in the soon-coming, glorious Kingdom of God!

Universal Lack of Natural Affection

What are some of the *reasons* why people become hardened in a cold, unmerciful attitude — totally lacking in compassion?

Today's widespread lack of "natural affection" is a worldwide, cancerous-like spiritual affliction! And the seeds of this lack of love and compassion often take root early in our lives!

Truly, we are living in the perilous times — the latter days — foretold by the apostle Paul: "This know also, that in the last days *perilous* times shall come. For men shall be lovers of their own selves . . . *without NATURAL AFFECTION . . . fierce*" (II Tim. 3:1-3).

This prophecy clearly reveals that in our time men would be *self-lovers*. But they would be woefully lacking in the *natural affection* which a normal person should possess toward his fellowman. They would have extreme hostility

(fierceness—verse 3) toward their neighbours, instead of loving their neighbours as themselves.

Paul also showed that this world's leaders, both *religious* and *secular*, do not like to retain God in their knowledge (Rom. 1:28)! This is certainly true of most of today's churches, colleges and other man-made institutions of learning! Man's *religious organizations* and his *secular institutions of higher learning* are primarily responsible for producing this blighted, bumper crop of hardened minds!

Since this world's leaders don't wish to retain God in their knowledge, God has given them over to "a reprobate mind" (verse 28). Such minds are destitute of the real truth—"Being filled with all *unrighteousness . . . maliciousness . . . murder . . . malignity . . . despicable . . . without NATURAL AFFECTION, implacable, unmerciful . . .*" (Rom. 1:29, 31). Such hate-filled minds often display open hostility not only toward their fellowmen, but also toward their very Creator (Rom. 8:7)!

There are other important reasons for this universal lack of "natural affection." Stop!—look carefully around you for the real answer.

The seeds of ruthlessness are planted early in life! In today's topsy-turvy world, little tots are brought up playing with "killer toys." They figuratively "mow down" their own brothers, sisters, playmates.

In the typical home, these same children are often subjected to constant *family bickerings* between various members of the family—between husband and wife, parents and children—between members of the family and the outside community.

Then, in addition, today's children are often not shown the right type, or the right amount, of real love and affection by their parents and other members of the family. Such children, reared in this dog-eat-dog society of ours, soon conclude that, if they are to survive, they will have to look out for number one—and let the devil take the hindmost!

But this isn't all! Modern children from infancy on up, are subjected to a continual, insidious barrage of *horror and violence via TV, the cinema and*

other forms of mass entertainment.

Such little children (potential sons of God!) are also the victims of their nation's *propaganda*—which conditions their little pliable minds to *hate* the supposed enemies of their country—the Germans, Japanese, Russians, Chinese, Jews, Arabs.

Worldwide Hate and Violence

Remember, Jesus Christ foretold that these days immediately preceding His return to this earth in supernatural splendour would parallel the days of Noah. And in Noah's time, "*the earth was filled with VIOLENCE*" (Gen. 6:11).

But never before in mankind's 6,000-year history has he been subjected to such unprecedented *hate and violence*: hot and cold wars, race riots, family brawls, rapes, muggings and other types of bodily assaults—not to mention the *vicarious* "enjoyment" of ready-made violence through our entertainment media.

In this heartless world, human beings often have more concern for their *pets* than they have for their fellow human beings. When the Russians first shot a *dog* into space, countless Britons loudly voiced their protests! But when a *man* was later sent up into space, there was hardly a murmur!

A London paper recently reported: "Laddie was Mrs. Lewis' whole life. The dog was kept in the matrimonial bedroom and slept on the bed. . . . The judge [who granted a decree *nisi* to Mr. Lewis] said Mr. Lewis moved a chair to make way for a visitor in front of the television set. The dog was bumped or stepped on and yelped.

"Mrs. Lewis complained that he did not even say he was sorry to the dog and she then attacked and punched her husband in front of the guest."

When will human beings come to their senses?

The 40 million human beings (including over 6,000,000 Jews) killed during the terrible carnage of World War II offer mute testimony of this world's cold, cruel, heartlessness!

You and I, members of God's Church, grew up in this harsh, competitive world. Whether we realize it

or not, we have imbibed all too freely of this world's ideas and attitudes. Without realizing it, we have become tainted with this *worldwide lack of natural compassion!*

But, are we doomed to remain shackled with this world's dog-eat-dog attitude of mind? Certainly not!

God has solemnly promised: "For *sin shall not have dominion over you: for ye are not under the [death penalty of the] law, but under grace [pardon]"* (Rom. 6:14).

Our Creator has bound Himself to provide a means of deliverance from every temptation we will ever face: "*God is faithful, who will not suffer you to be tempted above that ye are able; but will with the temptation also make a way to escape, that ye may be able to bear it*" (I Cor. 10:13).

How to Overcome this Hardness

There are three vital steps we must take if we want to overcome a hard-hearted attitude.

First, we need to recognize the fact that many in God's Church ARE sadly lacking in natural affection! This is the first step in overcoming this spiritual disease.

Next, we must admit our lack, confess it to God, and ask our loving Creator to help us overcome this universal lack of compassion for others.

Then, we must do our part to overcome this character weakness—by drinking in of the mind and character of God through prayer and diligent Bible study.

We can learn how to overcome this lack of natural affection by carefully studying God's Word to see how the great men of the Bible (Christ, David, Joseph) thought and acted—how they exhibited great love and compassion toward others. And we can see how these men of God showed real *godly* affection. By diligently *studying*, and carefully *following*, their examples, we *can* and *will* overcome this universal spiritual affliction—this gaping lack of natural compassion!

Christ's Infinite Compassion

Christ's earthly life was a perfect, shining example—revealing His deep

love, mercy and compassion for all men.

He continually taught men to have a forgiving, *merciful* attitude toward their fellowmen. "Blessed are the merciful: for *they* shall obtain mercy" (Mat. 5:7).

God hates cruelty (Prov. 11:17; 12:10)! God disinherited two of Jacob's sons (Gen. 49:5-7) because of their *cruelty* in slaying *all* the men of a certain town — when only *one* man was guilty (Gen. 34:25).

Jesus further admonished us: "For if ye forgive men their trespasses, your heavenly Father will also forgive you: But if ye forgive not men their trespasses, *neither will your Father forgive your trespasses*" (Mat. 6:14, 15).

The person who is unmerciful toward others will be judged harshly by God! "For he [the unmerciful person] shall have judgment without mercy, that hath shewed no mercy" (James 2:13).

Christ not only *taught* mercy and compassion; He also *practised* it! And His ultimate, supreme sacrifice upon the cross was the final capstone — proving His boundless love and compassion for all humanity!

Notice carefully the following examples of the deep compassion which Jesus Christ felt for ordinary, erring people.

On one occasion, Jesus noticed the milling throng, and was deeply touched at the thought of their spiritual wretchedness. "But when He saw the multitudes, *He was moved with compassion* on them, because they fainted, and were scattered abroad, as sheep having no shepherd" (Mat. 9:36). Christ then told His disciples that they should pray that God would send more labourers into the harvest (verses 37, 38).

On another occasion, "Jesus went forth, and saw a great multitude, and was *moved with compassion* toward them, and *He healed their sick*" (Mat. 14:14).

Christ performed His miracle of multiplying the loaves and fishes — because of His deep feeling for the people: "I have *compassion* on the multitude," said Jesus (Mat. 15:32).

Two blind men, sitting by the roadside near Jericho, cried out to Jesus:

"Have *mercy* on us, O Lord, thou son of David" (Mat. 20:30). Jesus never turned a deaf ear to any cry for mercy or help. This was no exception. "So Jesus had *compassion* on them, and touched their eyes: and immediately their eyes received sight, and they followed Him" (verse 34).

On still another occasion Christ was deeply moved by the sorrow of a widow who had lost her only son: "And when the Lord saw her, He had *compassion* on her, and said unto her, Weep not . . ." (Luke 7:13). Jesus then raised her dead son to life — out of sheer *pity* for this desolate widow!

One of the most moving examples of Christ's deeply felt emotion was shown through His profound concern over the awful calamity about to befall the inhabitants of Jerusalem — the very ones who would later cry out for His blood!

Jesus stood upon the Mount of Olives, surveying the rather peaceful-looking city of Jerusalem, lying below: "And when He was come near, He beheld the city, and *wept* over it, saying, If thou hadst known even thou, at least in this thy day, the things which belong unto thy peace. . . . For the days shall come upon thee, that thine enemies [the Romans] shall cast a trench about thee, and compass thee round, and keep thee in on every side, And shall lay thee even with the ground, and thy children with thee; and they shall not leave in thee one stone upon another . . ." (Luke 19:41-44).

And His prophecy was fulfilled with dreadful accuracy, as recorded by Josephus. The Romans razed Jerusalem, butchered and slaughtered many thousands of Jews inhabiting the city. The victors carried the rest of the Jews to the far-flung corners of the Roman Empire — as bond slaves!

And then, after Christ had spent three and one-half years "going about doing good, and healing all that were oppressed of the devil," He obediently, willingly gave Himself in the supreme sacrifice on the stake at Golgotha. Jesus, even in His agonizing death throes, was so filled with love, mercy and compassion that He was able to summon up enough pity to exclaim: "*Father, forgive them; for they know not what they do*" (Luke 23:34)!

Those were the words of the most noble, self-sacrificing and compassionate man ever born of woman! What an example for us to follow! Christ certainly never let *His* love for people "wax cold"!

Joseph's Natural Affection

Another shining example of one who possessed great "natural affection" — was Jacob's son, *Joseph*. His brethren, because of envy, sold him into slavery. Later, after he had become the Prime Minister over all of Egypt, Joseph revealed his love and compassion for his guilt-ridden brethren.

For some time Joseph purposely concealed his true identity from his brethren; nevertheless, he supplied them and their families with plenty of food to nourish them.

Finally, however, Joseph could contain himself no longer. In one mighty burst of love and compassion, he revealed to his startled brethren that he was in fact their long-lost brother, Joseph, whom they had sold into slavery many years previously!

"Then *Joseph could not refrain himself* before all them that stood by him; and he cried, Cause every man to go out from me . . . and *he wept aloud*: and the Egyptians and the house of Pharaoh heard. And Joseph said unto his brethren, I am Joseph" (Gen. 45:1-3).

Joseph, revealing great mercy, asked them not to be grieved because of their past sin against him in this matter: "And he fell upon his brother Benjamin's neck, and *wept*; and Benjamin *wept* upon his neck. Moreover *he kissed all his brethren, and wept upon them*" (verses 14, 15).

Any lack of "natural affection" here? Any false modesty against a man shedding tears here? Certainly not! The Bible does not teach that a real "he-man" should never show his emotions!

Merciful David

David, of all men mentioned in the Bible, was spoken of as being a man after God's own heart (I Sam. 13:14). Does God have human-like emotions? Yes, the Scriptures reveal *God has emotions* — love, hate, sorrow — very simi-

lar to those possessed by a balanced, emotionally well-adjusted person.

David was a robust, whole-hearted, likeable person. He made a number of serious *mistakes*; but when these *sins* were pointed out to him, he bitterly repented. (See II Sam. 12:13 and Psalm 51.) He learned the real meaning of mercy!

David cried out to God: "*Have mercy upon me, O God . . . blot out my transgressions. Wash me throughly . . . cleanse me from my sin. For I acknowledge my transgressions . . . Against thee, thee only, have I sinned, and done this evil . . . Purge me with hyssop . . . wash me, and I shall be whiter than snow . . . Hide thy face from my sins, and blot out all mine iniquities. Create in me a clean heart, O God; and renew a right spirit within me*" (Ps. 51:1-10). Yes, David really repented of his adultery, and subsequent murder!

Just what kind of a man was David? He was a man of considerable *emotion*, and he possessed a lot of natural affection.

On many occasions during his life, David showed his loyalty to God and to King Saul, by repeatedly refusing to take Saul's life! But Saul's envy and cruelty drove him to seek David's destruction!

David's depth of natural affection — his great compassion — was perhaps best revealed in his behaviour at the death of his rebellious son, Absalom.

Absalom committed insurrection against his father. By flattery and deceit he "stole the hearts of the men of Israel" away from loyalty to his father, David (II Sam. 15:1-6). Absalom's high treason finally culminated in his proclaiming himself king instead of his father, David.

David and his loyal servants had to flee to keep from being slain. In spite of Absalom's treachery, David loved this son so much that he sternly charged his soldiers not to harm him. This command, however, was not obeyed. Joab "took three darts in his hand, and thrust them through the heart of Absalom, while he was yet alive in the midst of the oak" (II Sam. 18:14).

When David was informed that Absalom had been slain — what was his reaction? "And the king was much

moved, and went up to the chamber over the gate, and *wept*: and as he went, thus he said, O my son Absalom, my son, my son Absalom! *would God I had died for thee, O Absalom, my son, my son!*" (II Sam. 18:33.)

David's grief was so bitter that he "covered his face, and *the king cried with a loud voice, O my son Absalom, O Absalom, my son, my son!*" (II Sam. 19:4.)

Yes, David was a man who had a tremendous capacity for compassion. Many of the Psalms David wrote are filled with deep emotion. They reveal the mind of a merciful, compassionate person!

David could never praise God enough for the limitless mercy and compassion which God had personally granted him.

"The Lord is *merciful and gracious, slow to anger, and plenteous in mercy. . . . Like as a father pitieth his children, so the Lord pitieth them that fear him. . . . But the mercy of the Lord is from everlasting to everlasting upon them that fear Him . . . to those that remember His commandments to do them*" (Ps. 103:8-18).

Learn to Be Compassionate!

Can you, brethren, now see the importance of learning to express more compassion — especially in this age when there is so little natural affection in the world? If we don't naturally have sympathy and compassion for people, then God will give it to us — if we ask Him for it in faith! "*And all things, whatsoever ye shall ask in prayer, BELIEVING, ye shall receive,*" said Jesus Christ (Mat. 21:22).

We must learn to be SOFT-HEARTED. But *this does not mean we should be SOFT-HEADED!*

Two of Christ's disciples, James and John, seem to have been rather uncompassionate, hard-boiled men by nature. Christ "surnamed them BOANERGES, which is, *The sons of thunder*" (Mark 3:17).

Their hell-fire-and-damnation approach to life is revealed in an incident as recorded in Luke 9:51-56. On this occasion, the Gentile Samaritans would not receive Christ and His disciples. This angered James and John, the Sons of Thunder!

"And when . . . James and John saw this, they said, Lord, *wilt thou that we command fire to come down from heaven, and CONSUME them*, even as Elias did?" (Luke 9:54.) They were ready to teach these Samaritans a lesson or two!

"But He turned, and rebuked them, and said, Ye know not what manner of Spirit ye are of. For the Son of man is *not* come to *destroy* men's lives, but to save them" (verses 55, 56).

A careful study of the epistles of the apostle John will lead you to the conclusion that he later became filled with much more *love* and compassion — after he was filled with the Holy Spirit at Pentecost. His epistles reveal a great deal of *love*. So, we see that it is possible for God's Spirit to give His children added love and compassion.

"Bowels of Mercies"

In this competitive, cut-throat, dog-eat-dog world in which we live, there is very little compassion, mercy or even natural affection. But, even though we may not have been born with a lot of natural affection, *we can receive God's supernatural love, mercy and compassion* — after we repent, are baptized and receive His precious Holy Spirit. This is the vital "*power from on high*" (Luke 24:49; Acts 1:8) which changed a cowardly, cringing Peter into a man of boldness (Mat. 26:69-75; Acts 2:14-40).

Some members of the very Body of Christ let themselves get upset because of something which one of their brethren says or does (or *supposedly* says or does)! Instead of ignoring, overlooking and forgiving the insult (or the *supposed* wrong) such people develop a hard, unmerciful attitude.

They let some disappointment, some grievance (or *imagined* grievance) disturb them so much that they finally let a "root of bitterness" spring up in their heart — thereby becoming defiled; and they sometimes contaminate others with their hard-hearted, bitter attitude!

We are commanded: "Looking diligently lest any man fail of the grace of God; lest any ROOT OF BITTERNESS springing up trouble you, and *thereby many be defiled*" (Heb. 12:15).

Yes, brethren, we need to be very
(Continued on page 15)

A COMPUTER TO SERVE YOU!

Although the designers of the new third generation computer, IBM's 360, don't know they designed this fantastic tool for God's Work, they did! God inspired its conception! He inspired its principles! He inspired its "Data Cell" random access storage unit — the major component that makes our 360 the most effective tool ever devised for multimillion character storage.

by Hugh Mauck
Circulation Manager

LONG before the advent of the 360 Computer, which IBM introduced April 7, 1964, we had teams of men looking into the computer field hoping to find some kind of *fast access computer* to handle our *rapidly growing PLAIN TRUTH* mailing list — but there was absolutely nothing on the market that would *effectively do our job*. We needed something *tailored to our specifications*, something new, something different, something that would not require our subscribers to have to use a subscriber code number each time they wrote in, something that did not require a number "tie-in" with subscription price, billing, and payments.

But we still needed *all the advantages* a required code number offered. And in addition to these advantages, we knew we must have *random access storage* to serve the many hundreds of inquiries into our files each day. We needed the ability to *CONSOLIDATE* all our many different types of name and address files into *one major MASTER RECORD!* And we needed extremely large volume file storage capacity with *high speed* input, output, and inquiry capability to maintain this one *MASTER RECORD FILE*.

There was *nothing on the market* we could find that would meet those requirements — nothing! And for years

we prayed about this dire need *knowing all the while* this Work was growing at the rate of 30 percent *every year!* If we did not find a solution in a few years we would have to have many hundreds of additional employees, many times the office space, many more buildings, and many more of the slower machines we were then using.

But there were many computers on the market! Most, if not all, the *BIG* magazine publishers were using computers — and they were able to maintain their subscription files — *WHY* couldn't we use what they were using?

The PLAIN TRUTH IS Different!

As you know, *The PLAIN TRUTH* is a *unique magazine* in many ways — one of those ways is the *absence of a normal subscription price*. Every major magazine on earth today, that is in any way comparable to *The PLAIN TRUTH* has a subscription price.

About ten percent of those who subscribe to *The PLAIN TRUTH* pay the subscription price for the entire one hundred percent — close to 900,000 subscribers never contribute a single penny!

They and *MILLIONS* more like them will *never have to pay a subscription price*, unless or until they personally

request to. They will *NEVER BE REQUIRED TO!*

But because all other *BIG* publishers do require a subscription price, they maintain records of payments and send statements to every subscriber, they are free to *require their subscribers to use a subscription number*, and they do! They ask you to use that number every time you write in!

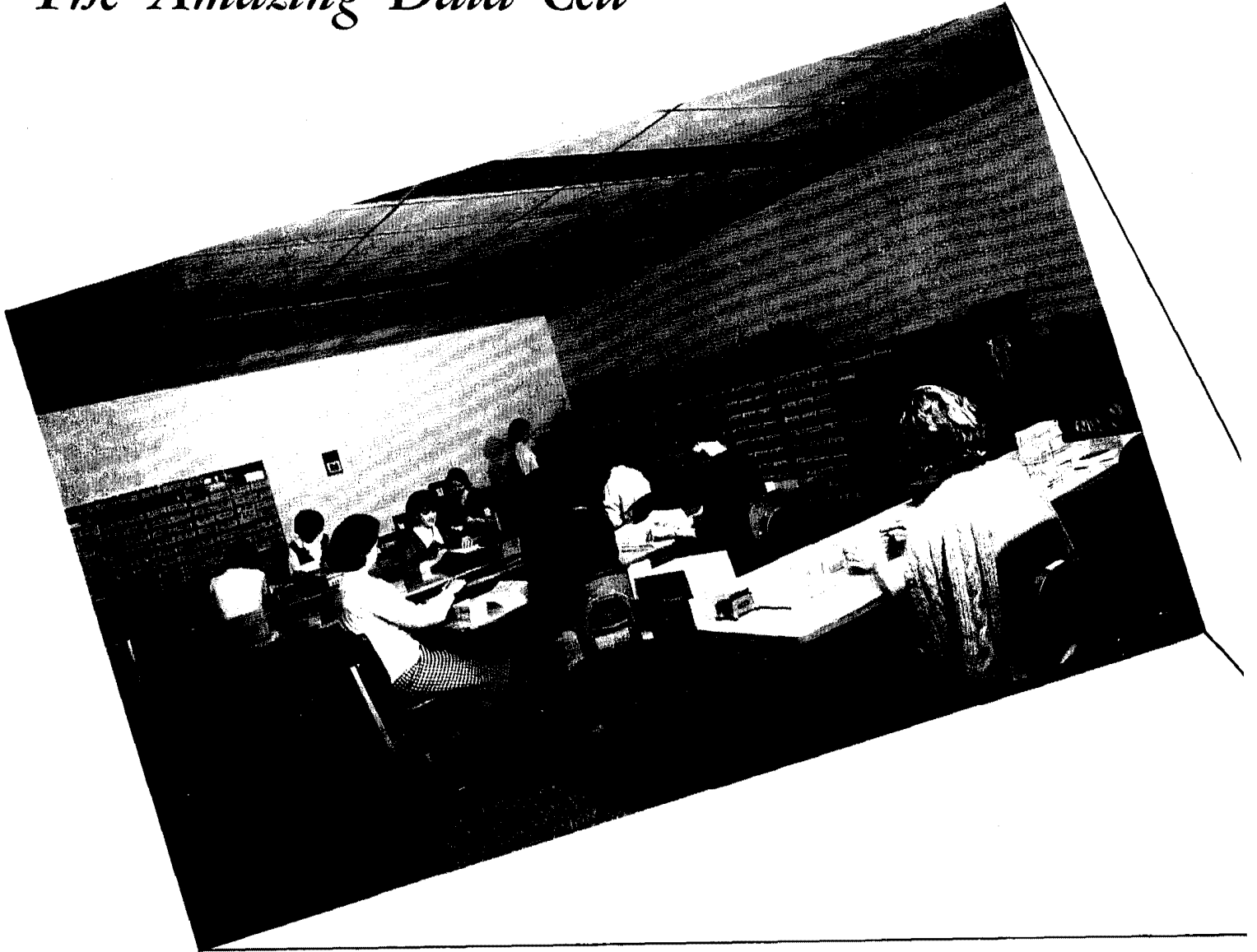
Reference to that number automatically tells them many things they need to know about their subscribers without having to inquire into large volume files. And when they do have to inquire into their files there is usually no urgent time factor, no one waiting on the phone for an answer — those who receive the incoming mail can know the answers to their questions by reading the label.

Their computers update their subscription records periodically as payments are made, and the computer in turn indicates the standing of each subscriber on their mailing label — by use of code numbers.

The "DATA CELL!"

Our files require *LARGE VOLUME random access storage*. This means we must be able to locate *any subscriber's records*, anywhere in our files, without the use of a subscription number, and

The Amazing Data Cell



Ambassador College Photo and Art

The picture above shows the major portion of our western hemisphere *Plain Truth* Subscription Department and some of the personnel necessary to maintain over 700,000 name and address records on IBM cards. If all these cards were taken out of the drawers and stacked in one continuous pile they would be three hundred and thirty-three feet tall—the height of a thirty-three story building! ALL this information has now been placed in two cells of the ten cell Data Cell Array, leaving eight cells still available for storing other data—up to a mailing list of 4,000,000! Notice the size of the data cell by comparing it to the pen lying beside the cell. The phenomenal reduction in storage space is more than matched by the 60% saving in the amount of work performed by these employees to maintain the files in the old card format.

without having to pass through hundreds of thousands of other records in sequential order (which a magnetic-tape-oriented computer system requires).

The "Data Cell" has this ability — *immediate access* is available at 55,000 characters per *second*. The access time to any record in the Data Cell file ranges from .175 to six tenths of a second and can be displayed on a cathode ray tube display screen in groupings of 480 characters displayed in 12 lines of 40 characters each. Or the entire records can be read from the

files and printed at *1100 lines per minute*, 132 characters per line.

We can now print out the entire U. S. PLAIN TRUTH mailing list — over 700,000 name and address labels — in **LESS THAN EIGHTEEN HOURS!**

When updating file records, any subscriber's name, address, status, (and any other information we may wish to update), may be flashed across the view screen in *microseconds of time*. These records may be updated (names corrected, addresses changed, status altered, inquiries made, etc.) through the media of a *typewriter type keyboard without removing* the original name and address from the storage file (which guarantees name and address will *never be misplaced* — as they easily can be with our former card system).

In addition to approximately 12,000 changes of addresses to process each month, we have an average of 3,000 other changes to make. And inquiries by phone from offices all over the campus with questions that can only be answered from our records run over *100 each hour* during the normal working day.

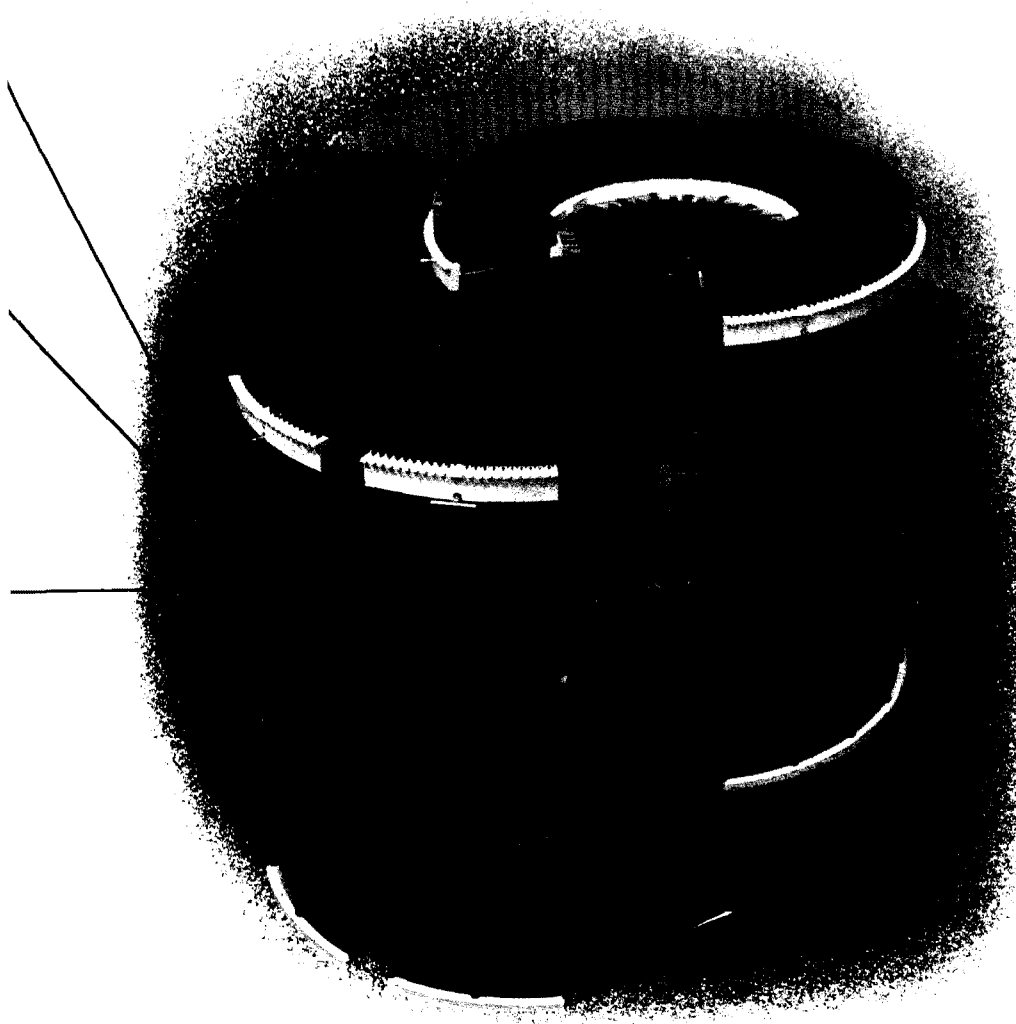
The Data Cell, although small in size, as you can see from its picture, has massive storage capacity — *400 million* characters! In addition to the random access requirements, this large volume is the *second most necessary requirement* for our computer system.

Other computer manufacturers have since come out with similar devices (since we ordered our 360 Data Cell oriented computer) that are about as effective.

What This LARGE VOLUME Will Do For Us!

The number of *different mailing lists* we have had to maintain at God's Headquarters has consistently grown over the years. Heretofore, there has been *no way to combine them*, though most of the names and addresses *are the same*.

For example, we maintain *the mailing list for The PLAIN TRUTH, The GOOD NEWS*, the periodic mailings in our Master Record — which is the Circulation Department mailing list for the United States — 700,000 entries (names and addresses). This is maintained in



ZIP Code sequential order. Not only does the Post Office Department require we mail in that sequential order, it guarantees us *faster more accurate delivery* of everything we mail.

We have a *Co-Worker ledger record*, to which we record many thousands of contributions from members and Co-workers — which must be maintained in *alphabetic* order. Without a compulsory subscription number, *we could never locate* any record in this file if it were maintained in numerical or ZIP Code order.

Then we maintain a third file for the *Ambassador College Correspondence Course* of over 75,000 entries. This file is maintained in the order in which students receive their lessons.

We have a file of over 40,000 entries for Letter Answering Department records; a file of over 20,000 Feast of Tabernacle Attendance records; and many smaller files for Church Attendance, special information, subscription renewal groups, and others.

These files are now maintained in about seven different offices throughout the campus, maintained in separate sequential orders, by different employees. They had to be in different offices because of the need for each department to inquire into and process them daily.

For rapid machine sorting and collating, these files have been maintained, for the past seven years on IBM punched cards, which is the major unit record in storage — now being replaced by the Data Cell.

These cards are passed through various types of machines that read the information from the punched card and print the information onto mailing labels, ledger records, and other printed forms.

Because of the daily activity in and out of these files, we have been unable to consolidate them into one MAJOR MASTER RECORD FILE!

We could not consolidate with cards, which are unit records, but can now with massive storage because of the *computer's ability to sort and collate at microsecond speeds*.

We collate into our PLAIN TRUTH files nearly 18,000 new subscribers every month, and we remove, because of cancellations, deaths, mail returns,

changes of address, etc., some 7,000. These *all require ZIP Codes* to properly locate their place in the file — which incidentally is why we wish *every subscriber* would use his *correct ZIP Code*.

If we tried to maintain this Master Record, under the card system, in *alphabetic order*, we would have been able to save many hours searching for and making record changes, but we would have to sort the file into ZIP Code order *before every mailing* — and we mail several times each month from these files.

Although no other stencil system can be sorted or collated faster than the card system, it is *much too slow for this volume*. To sort the entire 700,000 cards from alphabetic to ZIP sequence takes only 35 hours, but to *re-sort back into the alphabetic order* for file maintenance takes an additional 105 hours. For each mailing this would mean 140 hours — over three weeks time (on regular work shift), plus the week it takes to print labels.

And all during that time the files *could not be used for inquiry*, because the cards are not in the files. They are passing through the machinery. So until now it was impossible to consolidate the many files.

The computer completely eliminates the need for sorting and collating because *the original sequence is not disturbed* while printing the mailing labels. *Immediate inquiry is always possible!*

This is possible because of random access, which means we can *directly find* any record regardless of its location within the file through many methods. And within five minutes notice any mailing list can be started, whether it is a mailing tape for *The PLAIN TRUTH*, *GOOD NEWS*, *Co-Worker Letter*, *Annual Letter*, *Correspondence Course*, etc. This is what makes the consolidation of all our many files into one MASTER RECORD possible!

A Phone Call Away!

With the consolidation of these twelve major files into one MASTER RECORD FILE all our records will be combined under one name and address — all the information for *each individual will be in the same place* whether

it is subscription, Co-Worker or member activity, Correspondence Course activity, Feast attendance, Church attendance, etc.

And each department has access to those records *by phone call — immediately* — much faster than a file clerk can look it up in file cabinets at her elbow!

In the past a single change of address could go to and be updated into as many as twelve different files, by twelve different clerks, at twelve different times. *Now* a SINGLE ENTRY records the new address in *less than two minutes time*, which automatically updates for every category.

In labor alone this will *save more than \$20,000 each year*. *This is what the computer will do for God's Work*.

If we didn't even consider what the computer will save in labor alone, which will be over \$100,000 next year, with our increased volume, the computer will condense these one million records and maintain them for *less than one and one quarter cents per subscriber per month* (the cost of the computer divided by the number of subscribers' records maintained). As the mailing list continues to grow throughout the years that cost *becomes smaller and smaller and smaller!*

The Computer Record Identification Code

In the beginning of this article, I mentioned the use of a subscription code as being *very desirable* but not something we would require of our subscribers. Instead of a compulsory subscriber code number, we will use an *identification number* indicating to the computer the subscriber's name and address within our Master Record file.

But this number is *automatically assigned* by the computer when a new subscriber enters our mailing list. It is a number the computer uses and prints out on each subscriber's mailing label. This is the number *you will begin to see on your mailing label*.

Though it is not a number our subscribers should *memorize* or *write down* somewhere and use each time they write in about their subscription, if they re-

(Continued on page 24)

Will Your Love Wax Cold?

(Continued from page 10)

careful not to let *bate* fill our hearts. Don't ever let your love and compassion grow cold! We must learn to follow Christ's example: "Father, forgive them, for they know not what they do!"

For this reason we are commanded: "Put on therefore, as the elect of God, holy and beloved, BOWELS OF MERCIES, kindness, humbleness of mind, meekness, longsuffering; Forbearing one another, and forgiving one another, if any have a quarrel against any: even as Christ forgave you, so also do ye. And above all these things put on CHARITY, which is the BOND OF PERFECTNESS" (Col. 3:12-14).

We are further admonished by James, the brother of Jesus Christ, to be very careful to show pity and compassion: "If a brother or sister be naked, and destitute of daily food, and one of you say unto them, Depart in peace, be ye warmed and filled; notwithstanding ye give them not those things which are needful to the body; what doth it profit?" (James 2:15, 16.) James shows that *faith without works is dead!*

And the apostle John was inspired to add: "But whoso hath this world's good, and seeth his brother have need, and shutteth up his BOWELS OF COMPASSION from him, how dwelleth the love of God in him?" (I John 3:17, 18.)

We All Need God's Mercy!

How do you react to the suffering of others? Have you become so calloused or hardened toward suffering that you no longer feel any real sympathy (or empathy) toward those who suffer deprivation or physical pain?

We must all beware lest we become so hardened in sin that we let our love grow cold — lose our first glow of love, warmth and spiritual zeal!

I am sometimes appalled to see the hard, critical attitude of some members of God's Church — toward their own brethren, or even toward people in the world. We should never say or think: "It served him right!" "He had it coming!"

We are commanded not to even so

much as rejoice when our enemy stumbles or falls (Prov. 24:17).

One of the best ways to learn compassion is to develop the habit of putting yourself in the place of the other person who may be suffering deprivation, embarrassment, shame, physical pain. Don't judge too quickly, and *don't ever condemn!* You can't always know the *motives* behind a person's actions.

We are commanded: "*Speak not evil of one another, brethren*" (James 4:11).

How can we make sure that our love doesn't grow cold? How can we learn to have more compassion and natural affection for people? Here's how:

(1) *Realize that we are lacking in affection.*

(2) *Confess our lack to God, and ask Him for His love, mercy and compassion (imparted by His precious Holy Spirit) to help us overcome our lack.*

(3) *Diligently search the Scriptures* so we can note and follow the examples of the holy men of God — men who did have a lot of natural affection — men who did show a lot of compassion toward their fellowmen.

We can Overcome!

Through God's help we can overcome any lack of natural affection!

With His help, we can learn to have more compassion for people! We can really *overcome* our character weaknesses! And if we keep close to God in study, prayer and fasting, we *will* overcome!

Brethren you have seen Christ's warning — that "the love of many shall wax cold!" You now know what God requires of you. It is up to you, with the help of God, to overcome any lack of natural affection — any lack of compassion — which you have developed through the years!

Your love will not grow cold — if you willingly let God's Spirit mould within you God's *very character* — His *love and compassion!*

NOTICE!!

NATURAL FARMING PROGRAM REPORT

FARMERS, it appears advisable for you to continue your USUAL METHODS of soil preparation, planting and cultivating during this season.

We are NOT yet able to supply all the information, soil tests, and other services necessary for successful natural farming. Therefore, we advise against gambling with this season's production by introducing farming practices with which you are not *thoroughly* familiar. To begin new procedures in a haphazard manner may jeopardize your crop and cause financial ruin.

We plan to publish all pertinent information as quickly as we can, but it will *not* be available for this growing season. Such a changeover should be started at harvest time anyway — NOT in the spring.

In the meantime, we can supply a list of recommended books farmers can read for themselves to become familiar with many of the natural farming principles, in addition to our recently revised article "The Truth About Chemical Farming."

WORD TO



HUNDREDS have asked, many of you have asked me personally, "When do we go on TV?" My stock answer has been, after a few minutes' discussion of the subject, "We'll go on television when God leads Mr. Armstrong to decide we are ready."

Mr. Armstrong has decided!

HERE IS THE PLAN! Step 1: Immediately order black-and-white cameras and equipment in order to produce a TV program in the present Radio Studio.

Step 1A: Purchase time on KWHY-TV, Los Angeles, Channel 22, once per week. To begin the week of May 1, or as soon thereafter as our equipment is installed, and we can produce a program.

Step 2: July 15, 1967; PLACE AN ORDER FOR COLOR TV BROADCAST EQUIPMENT TO BE DELIVERED SPRING, 1968. This will include color cameras,

color film chains, and high band video tape recorders.

Step 2A: Purchase time on 12 VHF stations, approximately April or May of 1968.

Step 3: Add additional television stations one by one over the next two years.

Step 4: BY FALL OF 1970 OBTAIN TIME ON A MAJOR NETWORK, COAST TO COAST.

Quite likely, during the time period of 1968 to 1970, there will be a film duplicate made of the TV broadcast for international distribution, and television stations in other nations will be added.

Now, let's expedite!

In our first order of equipment, for the black-and-white taped TV broadcast, as much equipment as possible will be compatible for color or upgradable to color at a later date. Present plans call for Alma switchers, Riker, special effects generator, Telemation Sync gener-

ator, Tektronix RM529 wave form monitor, and Conrac video monitors. For the nontechnical, this represents some of the latest and finest TV broadcast station equipment. We are going heavy in switching and effects equipment because this is suitable for color later, and we will have the benefit of operator training and practice on the same equipment that will be used for color broadcasts. On the other hand, we are going light in black-and-white cameras and tape equipment. Probably we will use Norelco vidicon or Plumbicon cameras or used monochrome broadcast cameras and an educational type film chain, using Graflex, or modified Kodak pageant projectors.

Actually, we don't have room in our present Studio for anything larger than this type of film chain. Channel 22 owns ONLY a Sony BV-120 video recorder. Therefore, we will also purchase this type.

For some months, the daily broadcast

has been relayed to the library reading room from the Studio by way of closed-circuit television camera. For the past two weeks, Mr. Ted Armstrong has been addressing the camera directly, and video tape recordings have been made on our Ampex 7000 Recorder. Mr. Armstrong views these tapes later, and evaluates himself. He learns rapidly. His father, Mr. Herbert Armstrong, stated that there was one hundred percent improvement in a week's time. Of course, there is room for much more improvement, but he is rapidly becoming TV-oriented. Did you notice the recent program in which he made the statement that a whale's mouth is about "Yea big"? He made the appropriate gesture for television, forgetting that he was live on radio at the same time!

HERE'S HOW YOU CAN HELP!

PRAY! Pray for Mr. Herbert Armstrong to have wisdom in the overall decisions he makes. Pray for Mr. Ted Armstrong to develop a sincere compassionate, yet dynamic and forceful style of delivery for this new medium. Pray for me, and our TV consultant in the choice and selection of equipment to be used. Pray for the manufacturers to deliver this equipment on time. The Telemation Sync generator utilizing the new integrated circuit chips, is not quite ready yet. But pray that they will be able to make the April 15th delivery date, if it is God's will that we use this particular brand.

Letters will be appreciated from all of you who are already engaged professionally in the TV broadcast field. Suggestions regarding the type and brand of equipment, and so forth, will be appreciated for our consideration. Any of you who might qualify as an employee working directly with us, please forward a résumé of your experience to the Personnel Department, care of Ambassador College, Post Office Box 111, Pasadena, California, U. S. A.

And remember brethren, support God's Work liberally with your tithes,

offerings, and PRAYERS! This plan for color TV is no small undertaking. We have been given a commission and a job to do. Let's plunge steadily forward, without heartbreaking and morale-sinking setbacks. It can be done through God's Power and Spirit!

For some who will be wondering, we have considered production on film versus production on tape. It is true that a program could be produced initially at a much less cost in color on film, than on tape. It is also true that it is more practical to distribute to stations by means of color film than color tape, and also most overseas distribution will be by way of film. However, Mr. Armstrong believes that the production spontaneity of tape, the special effects, and techniques, such as rear projection and so forth, and perhaps primarily the fact that we will have our own complete production facility with production control in our own hands, and the impression our own color television broadcast Studio will make on the network officials, enabling us to obtain time on the network, justifies the choice to go color by way of tape.

We're going ahead on faith! Recent technical advances, such as the electron beam recorder, permit much higher quality black-and-white film copies of video tape than ever before. Also, the Technicolor Corporation has recently demonstrated a fairly satisfactory method of producing 16mm color film copies from color tape. The first film copy is extremely expensive, but each succeeding print brings the total cost per copy down, of course. We are expecting to see these processes improved,

and their costs lowered when *The WORLD TOMORROW* TV program has direct need for tape-to-film copies.

There are a multitude of jobs to be accomplished. We need top-flight technically qualified personnel. Many are already with us, and will be trained further. Also needed are camera and film chain operators, film editors, for the stock footage we will be using. Perhaps film production crews to shoot supporting footage in the laboratory on campus, out in the field, in the United States and around the world. We will probably buy stock footage, but the rates are high, and we may wish to use as much of our own as possible, as we are now doing with still photographs in *The PLAIN TRUTH*.

We also need artists for slides, charts, graphs, and so forth. Most of these requirements will be fulfilled by students and graduates of Ambassador College, but again, I repeat, if any of you have professional experience of this type, please send the information to our Personnel Department.

I forgot to mention that we must have a building by next spring in which to place all of this equipment! Probably, we will build a Studio Annex to the Parsons Building Complex, which has recently been acquired. We could possibly use an existing building on campus, but this does not seem to be a satisfactory decision.

Pray for wisdom, and the planning and construction of this building as well.

There you have it! The job is staggering, but God can do it! Let's get to work!

LEFT — Mr. Garner Ted Armstrong appears weekdays before the temporary TV equipment in the Radio Studio while (RIGHT) students and visitors view the Broadcast on closed-circuit TV in the library reading room.
Ambassador College Photos



HOW TO SOLVE BIBLE DIFFICULTIES

Apparent contradictions and other Bible difficulties are due mainly to carelessness in reading the Bible. This article shows how many difficulties can be solved by studying more carefully.

by Robert C. Boraker

WHY DO people *misunderstand* the Bible? Once you understand what your attitude should be toward Bible study, and once you know the right method of studying, you can examine more closely why people often don't understand what the Bible says.

Causes of Bible Difficulties

We cannot deny the fact that some passages in the Bible *seem* to contradict others. But the difficulty may be traced to one of two causes:

"1) Either the passages in question have not been studied with the individual and personal care and prayer which this Book demands. This *carelessness* lies at the root of nearly all the supposed difficulties that we hear about. Or, —

"2) As it does happen in a few cases, a mistake has been made by an early copyist in writing out the ancient documents now in our possession" (*Scripture of Truth* by Collett, pages 115, 116).

Carelessness in reading the Bible and *ignorance* of what it says is also a major cause of difficulties and seeming contradictions. Here is what Sims says about this: "Since so much knowledge is proved to be necessary to a right understanding of the Bible, we may easily believe that difficulties, or seeming contradictions, which occur to us in reading it, most probably arise from *our ignorance or inattention*" (*Helps to Bible Study*, by A. Sims, page 100).

The Different Kinds of Bible Difficulties

All the difficulties in the Bible — the "glaring inconsistencies," the seeming "self-contradictions," and the "manifest discrepancies" — can be found to be in one of several major groups.

The *first group* of difficulties to consider are those due to present-day ignorance of *conditions and circumstances* under which the Biblical books were written. Because of *ignorance*, people *misunderstand* the *time* when the events were recorded and the commands given. Whenever there is a time gap between one passage and another, there may have been a change in the circumstances. This difference will explain some apparent discrepancies and remove any hint of a contradiction.

In this group we can include those "moral difficulties" having to do with the conduct of people in Old Testament times — the difficulty of understanding why God commanded Israel to exterminate the Canaanites when Christ said we are to love our enemies — of understanding why polygamy and other things were practiced by men of the Old Testament.

People of the Old Testament didn't have a complete understanding of God's ways — not having the fulness of the Holy Spirit to guide them as those living after the coming of Christ. It was those "times of ignorance" that God "winked at" or overlooked (Acts 17:30). *We cannot judge the conduct*

of people living in Old Testament times by the standard given by Christ and His apostles.

We must consider when the act took place in a man's life before making a proper evaluation of his character. Jacob and David practiced polygamy *before their conversion* — but they repented of this and had only one wife after conversion (see the article, "Here's the Plain Truth About Old Testament Polygamy" in the October, 1963 PLAIN TRUTH, page 13).

Who is Speaking?

Some difficulties are caused by carelessly *assuming* who is doing the speaking. Words are even attributed to *God* when *Satan* is actually the speaker. When we say that the Bible is the Word of God — *inspired* by God with His authority — we *don't* mean that God is the speaker in every single quotation the Bible contains.

The Bible often records what others say — good men, bad men, inspired men, uninspired men, angels, holy or fallen and Satan himself.

The *record* of what they said is absolutely true, but the *words* they said may or may not be true.

Genesis 2:17 says: "Thou shalt surely die" and Genesis 3:4 says, "Ye shall *not* surely die." Is there a contradiction? No! The first verse gives the words of God — the latter, the words of Satan. It is true that the Devil *said* these words recorded in Genesis 3:4, but he told a *lie* — a lie believed today

by those who say man has an immortal soul.

Careless readers of the Bible don't notice who is doing the talking. They will tear a verse right out of context regardless of the speaker. Many difficulties in understanding the Bible arise from not noticing who is speaking. Always notice *who* is speaking and *what* is said. The Bible will sometimes record what a man said to God which may or may not be true.

In studying the Bible, if God is the speaker, believe what He says. If an inspired man is the speaker, believe what he says. If an uninspired man is the speaker, judge it according to the law and the testimony of what God has said and revealed. (Isa. 8:20.) What is said is perhaps true, perhaps false.

If the Devil is speaking, remember that he was a liar from the beginning, but even he *could* tell the truth at times, or he will mix truth with error.

Ask yourself: "Whose are these sayings? Are they recorded as being inspired, or inserted as a mere matter of history? Does the writer endorse the statements as being true, or merely record them?" The answer to these simple questions will often be the only solution a problem needs.

Differences Between Bible Writers

Even between the inspired writers of the Bible there may *appear* to be disagreements or contradictions. One reason is because a basic idea can be said in different ways. When Christ was tempted by Satan, He quoted from the Old Testament and said: "It is written, That man shall not live by bread alone, but by every word of God" (Luke 4:4 and compare with Mat. 4:4). But the original quotation in Deuteronomy 8:3 says: "Man doth not live by bread only, but by every word that proceedeth out of the mouth of the Lord doth man live." Both scriptures convey the same basic idea though *phrased* differently.

Inspiration doesn't prevent a writer from using his own personal method of expression. Haley says: "Inspiration does not destroy the individuality of the writers. It deals primarily with *ideas*, rather than with *words*. It suggests ideas to the mind of the one

writer, allowing him, generally, to clothe them in his own language. In this way his individuality is preserved, and his mental peculiarities and habits of thought make themselves felt in his writings. On this principle we account for the marked difference of style among the sacred writers, as well as for their occasional divergences in setting forth the same idea or in relating the same circumstance" (*Alleged Discrepancies of the Bible* by John W. Haley, pages 6 and 7).

You can compare Isaiah 61:1, 2 with Luke 4:18, 19 and see how Christ quoted from the Old Testament. *He didn't follow it word for word*. Also notice how Matthew condenses Isaiah 9:1, 2 in Matthew 4:14-16.

An inspired Bible writer was not required to follow the same routine of words. When New Testament writers quoted from the Old Testament, they didn't think it wrong to modify those quotations. They grasped the sense and basic thought of the Old Testament writer and then molded that thought into the form that would best serve the people to whom they were writing. This principle accounts for the apparent discrepancies between the phraseology of the Old Testament and the citations in the New.

Writers Differ in Approach

Consider also the point of view and objective of each writer. Two Bible writers may approach the same subject from two different angles. Both accounts must be studied to see the whole truth.

Writers also have different methods of arrangement. One writer may follow a strict chronological order. Another, groups associated ideas together. While one will write history in detail as the events took place, another will omit some events, condense others, or expand them. One writer may give us an orderly, well-constructed biography, but another may give us merely a series of stories grouped together to illustrate some specific point.

In recording the same event, different writers may record different circumstances, some giving more facts and some fewer. A more complete account will include the facts given in the short-

er one and the shorter account will not contradict the more complete one.

This solution is especially useful when studying the four Gospels. The differences in the four Gospels are due to the fact that the writers did not depend on one thing nor draw their accounts from one source. Each one gives only an incomplete history, introducing those details with which each writer was familiar.

If we knew *all* the circumstances of the case, those which we *now* know would seem to fit perfectly into their appropriate places in the account. Not one of the Gospel writers gives, *nor intended to give*, ALL the details. Each selects those particular facts which seem to him to be the most important and passes by incidental points.

Each writer records only what referred to his own particular purpose or experience. Thus, many of the minor connecting facts have not been preserved and recorded. Therefore, we must fill in the missing facts ourselves by resorting to deduction and possible explanations.

Here is what Sidney Collett says about this point: "Let those who imagine they have discovered errors and contradictions in the evangelists' writings remember how easy—indeed, how natural—it is to give three or four accounts of one circumstance from different points of view, each account being quite different from the others, and *yet absolutely correct*" (*Scripture of Truth*, page 140).

You will notice that the Gospel of Matthew doesn't follow any chronological series of events or instructions, but groups together associated ideas that portray by living pictures what Christ was like in various circumstances. Mark and Luke are generally chronological.

Realize that each writer followed his own method of arrangement and told his account in his own way. Because the personalities of writers differ in the way they express themselves doesn't mean they disagree with each other.

How Was Time Reckoned?

Writers may also differ in *reckoning time*. The nation of Israel used both a civil and sacred calendar. The sacred

And Now the Poconos!

(Continued from page 6)



night is a bit more nippy. For the same years, the average mean low is 37.9 degrees. Since the recorded mean temperatures are for the whole month of October — we would have to adjust upward slightly for the earlier part of the month. (The Feast when falling in the month of October would usually occur in the earlier part.) For the month of September — the month during which the Feast of Tabernacles usually comes — the adjustment upward would be considerable.

The low temperatures would not adversely affect us. These generally occur in the very early hours of the morning — around three to four a.m. The evenings should be quite mild and comfortable.

Although precipitation could occur, it is not likely. Outside of a rare exception, any rain would be mild in that part of the season. Wind is not a major factor. It can occur. Even so, it will not affect us measurably because of wooded protection on all sides of the tent area.

If you have never seen the flaming foliage season in the northeast, you have a rare, breathtaking experience awaiting you. The color is fantastic. The leaves of all deciduous trees begin to turn to their autumn colors at that exact time of the year. This is a beautiful season in most parts of the northeast, but it seems that the interplay of color in this area is superior to all. Come prepared to really enjoy God's handiwork. Be observant. Do not miss the beauties of your surroundings. Your awareness of an appreciation for God ought to be heightened — appreciation for an artist of unending talent and variety.

Property Deeded in God's Name

Accommodations are plentiful. Recreation superb. Roads and highways adequate. Weather most acceptable. But where were we going to convene for the regular preaching services? There is no large, well-equipped auditorium in that area to handle even a small group of members for the Feast of Tabernacles. A tent would suffice. But where could it be pitched?

The quest for an area to pitch a tent

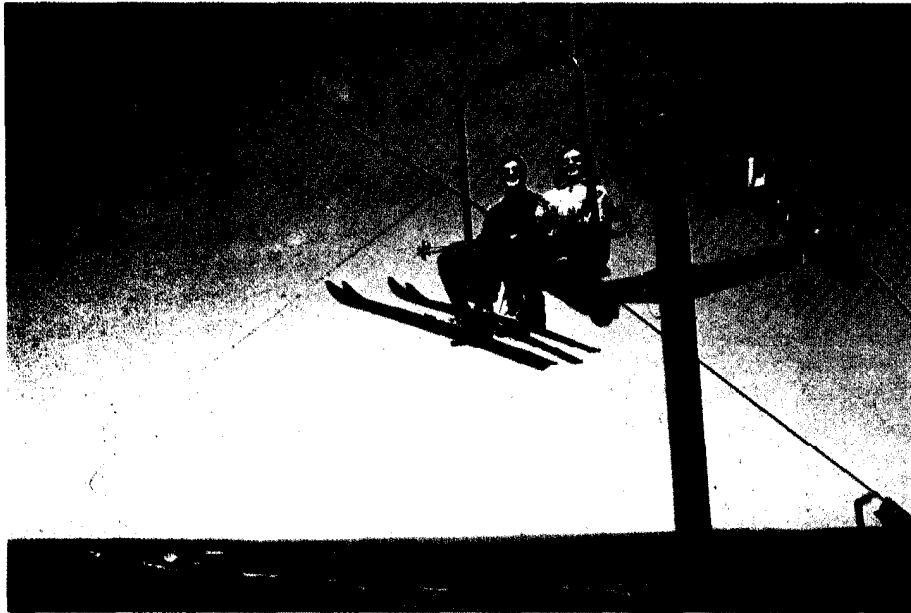
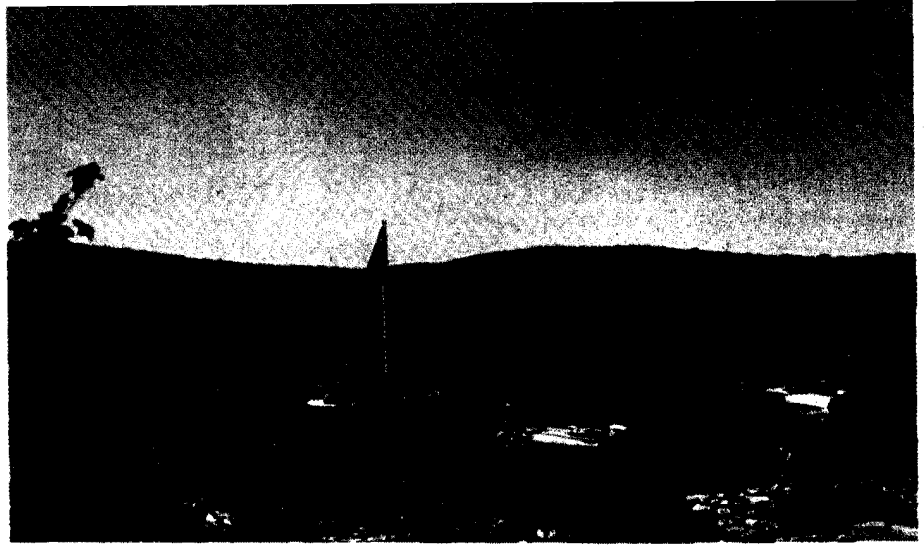
Some of the truly breathtaking beauty seen in the Pocono area! ABOVE and BELOW — Fall scenes just as the leaves are turning brilliant hues of gold and red. RIGHT TOP — Sailing and water skiing facilities are accessible on the many lakes in the area while, CENTER, others may prefer to use the ski lifts for the lovely and inspiring view, and yet others (BELOW) may prefer the horseback riding available for the many riding trails.

Photos Courtesy Mount Airy Lodge and Pocono Scenicards



April, 1967

was commenced. First, the general thought was to locate a small—very small piece of property adjacent to one of the larger resort accommodations in the Poconos—adjacent to Mt. Airy Lodge. This seemed so ideal to several of us. Yet God just did not open the door for such an arrangement—regardless of the manifold efforts of ours to make this thought come to fruition. We looked at the open areas of Mt. Pocono Airport. This definitely was not acceptable. A quick look at open parking areas of the Camelback Ski resort



tors and asking questions of businessmen we know, no such land was found. About the time discouragement began to take hold of us, God opened the door.

On a trip which took us by the now well-known place, High Point Inn, a compelling desire to talk to the proprietor, Mr. Colovos seized us. We had met him on a couple of occasions previous to this.

He was in. We were invited into his office.

Immediately he explained that he had been reflecting back over past contacts and was personally hoping for an opportunity to talk with us. Once he had explained the reasons for his de-

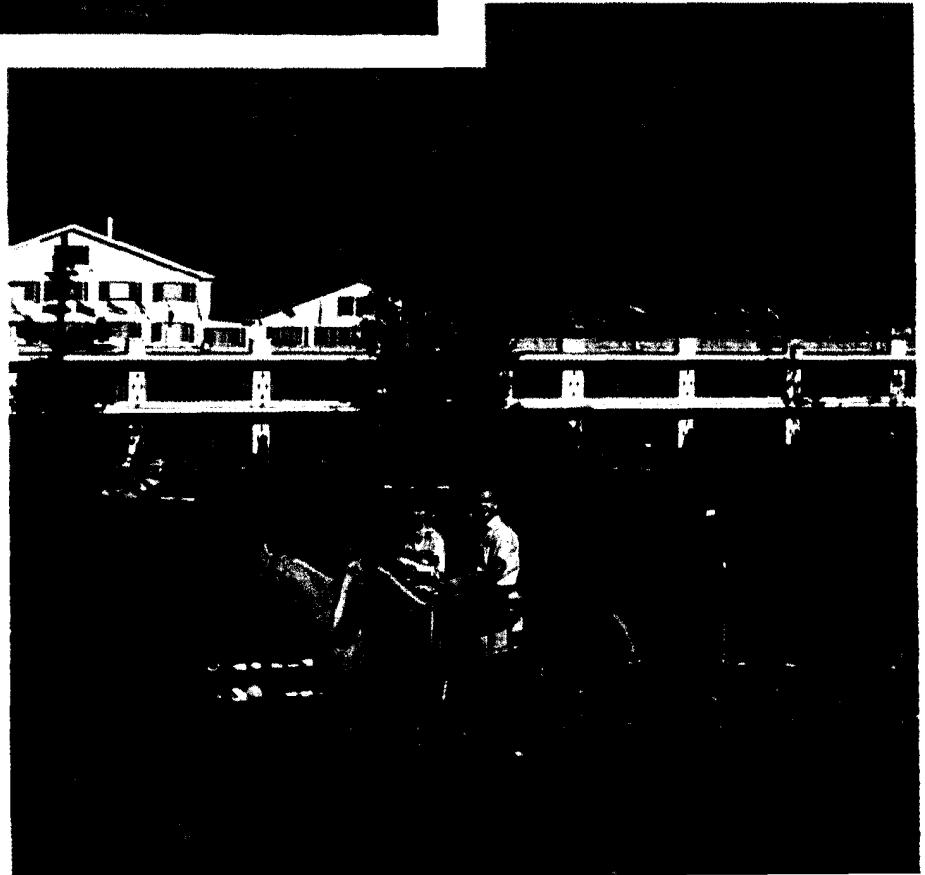
area proved them to be unsatisfactory. All such attempts proved fruitless.

Where to, from this point?

During the above search, it was becoming apparent that we might need to buy a larger piece of property on which to develop our own facilities for the Feast of Tabernacles in the northeastern part of the United States.

The Way Opens Up

For several days, encompassing several weeks, a couple of us canvassed the general area of Mt. Pocono and vicinity. We knew basically what the topography had to be like. The land must be generally level. It must be strategically located to ample roadways—to facilitate a few thousand cars. Electricity, water, accessibility, location and drainage were other characteristics which had to be considered. Despite efforts of personally criss-crossing the desired area, being shown available property by Real-



sire he was most willing to help us with the problem of locating desirable property. We were invited to tour the area with him. While looking at an extensive acreage for sale we had heard about, the thought entered the mind of Mr. Colovos to show us a piece of property which had been tied up in court action for over four years.

What a piece! It had every advantage which we had been looking for — and advantages which we did not anticipate or even allow ourselves to hope for. Bounded on three sides by good highways. Virtually level. Most accessible. It had everything.

But was it possible to secure land so legally involved? Mr. Colovos assured us he would do his best to begin necessary action to unencumber the property. He was the court-appointed Trustee of the property while involved in litigation. Through his influence and that of others involved, the court appointed a day on which the property would be up for auction sale. We were represented by our legal counsel from Pasadena, California. Mr. Rader in a tense court auction finally placed the high bid.

The property was ours! God had directed us to the most ideal, strategically located piece of property in that whole area. We were marvelously blessed — thanks to our Father in heaven who really does care.

Preparation for Feast

We now owned approximately 260 acres of basically undeveloped land. A monumental task now confronted us. In what way could this land be best utilized for the purpose for which it was secured? Where should the parking areas be located? Where should the tent area be?

After much walking — criss-crossing the property — it became apparent where these various component parts of the overall Feast site should be placed. Decisions were made.

Now for action!

Since much of the land was yet heavily wooded with native timber, the specific areas had to be staked out for clearing. Once this chore was accomplished, a contract was let out to a local clearing and excavation company — the

Schwartz and Baker Company — for clearing and grading. Giant clearing and earth-moving equipment was brought in for the task. These huge crawler-type tractors made quick work out of the timber removal. The trees were uprooted, piled and at appropriate times set afire. Now, where once stood a dense eastern forest, there remains only an open field. A field which has been basically levelled and graded for paving and preparation for the tent to be used as the auditorium for the Feast of Tabernacles this Fall.

Due to early winter snows, the grading was not quite completed last Fall. As soon as the winter snows are gone and the ground dried out, the excavation, levelling and rolling will be completed. This should be done in the latter part of April or the early part of May.

Following the completion of grading work, the paving contractors will move into the property for their work. Parking lots, roadways and apron for the tent area will all be paved for convenience. The time required for this major operation should consist of no more than eight weeks to ten weeks. During this time and following its completion, administration building, counselling rooms for the ministers, information booths, sanitation facilities and other assorted buildings must be constructed.

Time is of the essence. We will be working feverishly on this project in the last weeks prior to the beginning of the Feast. But with careful planning, the losing of no time, and with God's guidance and help, the project will be ready for use.

Since this is a major project in the area of Mt. Pocono, many official contacts must be made. Contacts with County Planning Commission, the State Highway Department, Department of Forest and Water, Health and Sanitation Departments and Police Department. The speed with which we are able to finalize the plans, gain the green light from responsible local officials depends entirely upon the favor we are granted before such authorities. This is where your part comes in. You must pray that such favor will always be granted — and granted quickly with little difficulty. We anticipate no prob-

lems. Arrangements and work will move along smoothly if you do your part.

Now you may ask, what is the general physical terrain like? What are the community responses? How have we been received?

The Feast site is in the very top of the Pocono Mountains. Mountains? Well, yes, but not the high — awe-inspiring — mountains of the West Coast. The average elevation is no more than 2,000 feet. They are not craggy and precipitous. In terminology which will be more readily understood by a westerner, they are gentle "rolling hills."

They have a native beauty — unique to themselves. Heavily forested with deciduous trees. A tree bearing leaves which turn to a variety of colors after the first frosts.

There are many lakes, streams and rivers. These streams cut across the mountains like so many pieces of ribbon. Many of the resorts are situated on lakes. Owners have capitalized on the ceaseless interest in water. Such lakes afford almost endless recreational opportunity.

Yes, indeed: In their intrinsic way, the Pocono Mountains project their own beauty — beauty that is characteristic to the area and to themselves. I am sure all who see them and are cognizant of God's handiwork will concur.

Community Response

Finally, just one significant closing remark. We have been most graciously received in the community. The people are excited and expectant. They have been sold on the virtues, courtesies, honesty and obedient responsiveness of God's own chosen people. You must be a light — a light to the people so that they may see just how God's own people really do live.

Let us not grumble or complain. Be thankful for what God has given — for the privilege of attending His Feast of Tabernacles. Radiate that joy, happiness and thankfulness which servants of God must possess.

God's people follow directions. They abide by directives and general instructions. Do your part to make this a Feast to remember.

How To Solve Bible Difficulties

(Continued from page 19)

year began in the spring with the month Nisan or Abib. The civil calendar was reckoned as beginning in the autumn with the month Tishri.

If two writers disagree on the month and day of an event, we must see whether or not they use the same calendar for reckoning. If one bases his date on the sacred calendar and the other uses the civil calendar for his computation, both would actually be correct once we understand the difference in reckoning.

Some say John 19:14 contradicts Matthew 27:45. John describes events before the crucifixion which he says took place at the "sixth hour." Matthew says darkness covered the land *after* the crucifixion from the sixth to the ninth hours. Mark 15:33 and Luke 23:44 say the same.

Obviously, John is using the Roman reckoning of time — counting from midnight. To John, the "sixth hour" was 6 o'clock in the morning. According to the Jews' reckoning of time, this was the *first hour* of the day.

When Bible writers seem to disagree as to numbers and dates, there is no discrepancy unless it can be proven that they intended to reckon *from the same point and by the same method*.

The Language of the Bible

To some people, the language in which the Bible was written will make it difficult for some parts to be clearly understood. Since the Bible is a book for all ages and for all kinds of people, it was written in the kind of language and terminology that could be understood by the common people of all ages.

The Bible is not a scientific textbook. Though it does give the basic foundation for understanding science, it is written in language for the average man — not in some technical and scientific terminology that could be only understood by scientists and experts in fields of technology.

When the "sun stood still" during the time of Joshua's long day, the Bible is not speaking in the language of

scientists. Technically the earth stopped rotating. But to the observer on earth the "sun stood still."

Much of the Bible is written in the form of poetry or in language that is descriptive or figurative. As an example, notice the description of a thunderstorm in Psalm 18. In Psalm 42:9, David describes God as a rock and in Psalm 91:4 speaks of His wings and feathers. There would be no end of such "absurdities" if you were to interpret such passages in a literalistic and matter-of-fact way. You can know when a scripture is speaking in a figurative language if you are *honest* and use *common sense* when studying it.

Writers will also express things in different ways. Certain things may be said to be done by one man in one place whereas in another place it may be said to be done by another person who acted *on his behalf* (see Mat. 8:5-6 compared with Luke 7:2-3 and Mark 10:35 compared with Mat. 20:20). Sometimes the plural is used when the remark is actually to be applied to one person only (see Mat. 26:8 and John 12:4; Mat. 27:44 and Luke 23:39-42). In these cases there is actually no contradiction.

Errors of Copyists and Translators

Some difficulties in the Bible may be due to errors made by men who copied the manuscripts or by those who translated the original Hebrew and Greek into English. You need to realize that the original manuscripts of the books that compose the Bible no longer exist. The original manuscripts were copied many times and though they were copied with great care and exactness, some minor errors crept into the copies that were made. But through careful study, we can know what the original text was. There is not one important doctrine that depends on any doubtful reading of the text.

The errors due to copyists are trivial for all practical purposes. They usually are in relation to numbers and the

spelling of names — technical points that have no bearing on salvation and the purpose of life. Errors in figures would be easy to make, especially since Hebrew figures are made by using letters of the alphabet — letters that appear very much alike in many cases. As an example, the first letter of the Hebrew alphabet represents the number one. With two little points above it no larger than flyspecks, the number becomes a thousand. A copyist need only to make a very slight error to make a great change in figures.

"Although it is certain that the words were often spelled out, the fact that signs were often, though not universally used, would be enough to account for all the discrepancies in numbers found in the Old Testament" (*Peloubet's Bible Dictionary*, page 457).

Errors in Translation

More serious are the errors of the translators — the men who translated the Hebrew and Greek texts into English. In some cases, the English translation gives a *wrong meaning* to the words or expressions of the original Hebrew or Greek.

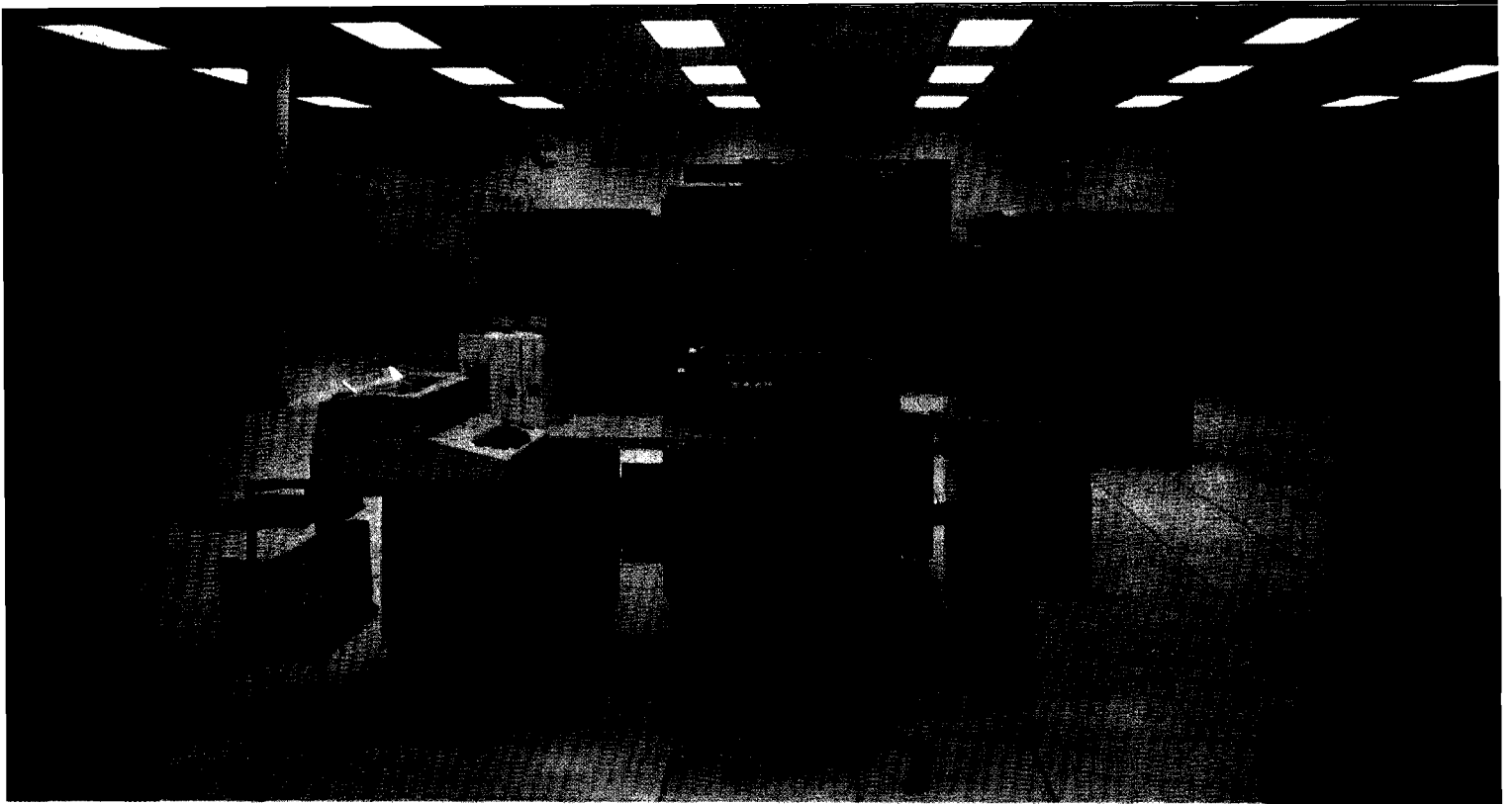
One such glaring error is in Matthew 12:40 where we read that Jonah was swallowed by a "whale." Perhaps there are types of whales that can swallow a man, but, in any case, this is not an accurate translation. The original Greek word means "great sea monster." Christ was referring to Jonah 1:17 which says it was a "great fish" that swallowed Jonah.

Discrepancies may frequently appear in the King James Version when none actually exist in the original text. This is because the translators have used the same English word to represent several Hebrew or Greek terms.

For example, Luke 13:24 would appear to contradict II Timothy 2:24 because of how the word "strive" is used. Different Greek words are used, but translated the same. The term in Luke should have been translated "agonize."

Other principles that will help you solve Bible difficulties will be given in the next installment. Don't miss it.

(To be continued)



Ambassador College Photo

turn *their mailing label* (it is the label we need—not the number) when making changes of address, the label will save us time and money because *it verifies* who they are, where they did live, and whether they have a duplicate in the file *at another or different address*.

And although we cannot ask our subscribers (the 90 percent who do not support God's Work), we would like *to encourage you members to use the Co-Worker envelopes we send you, which will give us that number and give us "back-up" indication we would like to have when recording new information to your existing records in the computer.*

Most BIG magazine publishers require a subscription number *to help them*, but this label, which we wish to encourage you to use, *is to help you!*

Its use will guarantee, above what we can normally guarantee, *your records will never be confused* with another person who may have your same name. Also, for that reason, it is very important when your children contribute we know *who they are.*

We record over *2,500 contributions each day*, and for each contribution we type name, address, date, and amount (about 10 key strokes each).

When this typing can be copied from *our own return address envelopes,*

which we send with each Co-Worker Letter, we can save *50 key strokes for each record*—we save between 100,000 and 125,000 key strokes each day, which amounts to *two full-time typists.*

Thus far I have briefly explained *what the computer will do for God's Work TODAY!*—and *why we need it*—that it will save time and money, and that it gives us the ability to do the Work much more efficiently and effectively, but its *future potential is even more amazing!*

We were rapidly outgrowing our ability to cope with the expanding activity of College Registration and record keeping, Budget Control, Assigning Feast Housing, Business Activity and Finance, Inventory Control, Payroll, Test Scoring—all of which the computer has been designed to handle with ease.

And with the ability of the computer *to obtain instant information* and flash it across a view screen, it can become *one of our most valuable tools for TELEVISION PRODUCTION!*

I mentioned earlier that the 360 is a system especially *tailored for us.* By that I don't mean we contracted with IBM to design a special computer for us alone—but I do mean God *knew* ahead of time what we needed *this year* to handle the increase in His Work, and *He inspired its conception*

From left to right in the computer room are the four tape drives, the Data Cell Drive (in the background), the Control Console for the entire system, two control units (connected under the floor to the main control panel), and a card reader. Not pictured, further to the right are the IBM Printer and the Disc Files.

to fulfill that need, and He inspired the TIME OF ITS CONCEPTION!

The Next 3 Years!

Back in the year 1957, we were working under extremely cramped conditions, in a small Circulation Department Office, that at one time had been a garage apartment building. We had *reached the limit* of our capacity—there was absolutely no room for expansion, and the mailing list was barely growing at all.

Then in January, 1958, we moved into a larger building that we converted from an old furniture store and warehouse. The Work increased so rapidly and we filled the larger building so quickly *it was startling*—the Work literally SURGED AHEAD.

Then in the year 1961, after we converted from our old Addressograph mailing system to the IBM punched card system, the Work took another *tremendous leap forward*, and we had all we could do to handle the increase, even with all the new, modern equipment.